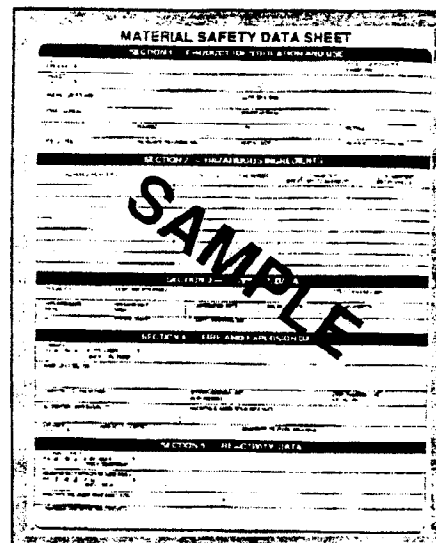


An **MSDS** is a sheet that gives **more detailed technical information** about the product. It is broken up into nine sections

- **Product information** - description of the chemical
- **Hazardous ingredients** in the product
- **Physical data** (chemical properties of the ingredients)
- **Fire and explosive hazard** - how easily it catches on fire or explodes.
- **Reactivity data** - describes how it reacts with other chemicals
- **Toxicological properties** - describes how it affects human health
- **Preventive measures** to be taken
- **First aid measures** to be taken if exposed
- **When it was made** and for more information **who to contact** for more information



Employers **must keep the MSDS up to date** (no older than three years) **and on file** at the worksite, and **must allow employees to read** them and make copies of them.

The employer must educate workers about important information on the sheet for each chemical.

First Aid - What to do first if you or a classmate is injured.

Injury	What to Do First
Burns	Immerse injury in cold water . Inform your teacher.
Cuts and bruises	Stop any bleeding by applying direct pressure to the wound. Cover with a sterile or clean dressing. Apply cold compresses to bruises. Inform your teacher.
Fainting	Keep the person lying down. Loosen any tight clothing and keep others from crowding around. Inform your teacher.
Chemicals or foreign matter in eye	Flush with running water for at least 15 minutes . Inform your teacher.
Poisoning	Identify the suspected poison and call your teacher immediately.
Spilling chemicals on skin	Remove contaminated clothing. Flush with running water for at least 15 minutes . Inform your teacher.

Scholar[™] Chemistry

MATERIAL SAFETY DATA SHEET

5100 W. Henrietta Rd.
West Henrietta, NY 14586
TEL: (866) 260-6301

9425606 9425608 9425707
9425806 9425808 9425809
MSDS No. 9425900 9425806
Effective Date: May 17, 2005

SECTION I NAME 24 HOUR EMERGENCY ASSISTANCE

Product	Sand	416-984-3000		<table border="1"> <tr> <td>Health</td> <td>1</td> </tr> <tr> <td>Flammability</td> <td>0</td> </tr> <tr> <td>Reactivity</td> <td>0</td> </tr> </table>	Health	1	Flammability	0	Reactivity	0
Health	1									
Flammability	0									
Reactivity	0									
Chemical Synonyms	Silicon Dioxide, Quartz, Crystalline Silica									
Formula	SiO ₂	HAZARD RATING	Minimal 0	Slight 1	Moderate 2	Severe 3	Very Severe 4			
CAS No.	14808-60-7									

SECTION II DANGEROUS INGREDIENTS

Name	%	TLV Units
Sand	> 99%	TWA: 0.1 mg/m ³

CAUTION!

SECTION III PHYSICAL DATA

Melting Point (°C)	1610°C	Specific Gravity (H ₂ O = 1)	2.65
Boiling Point (°C)	2230°C	Percent Volatile by Volume (%)	N/A
Vapor Pressure (mm Hg)	N/A	Evaporation Rate (Butyl acetate =1)	N/A
Vapor Density (Air=1)	N/A		
Solubility in Water	Insoluble.		
Appearance & Odor	White, yellow or tan crystals or granules; no odor.		

SECTION IV FIRE AND EXPLOSION HAZARD DATA

Flash point	Not flammable.	Flammable Limits in Air % by Volume	N/A
Firefighting Procedures	This material will not burn.		

Flammability and Explosion Hazards

None.

TDG Not a TDG controlled material.

The information contained herein is furnished without warranty of any kind. Employees should use this information only as a supplement to other information gathered by them and in independent determinations of suitability and completeness of information from all sources to assure proper use of these materials and the safety and health of employees. For laboratory use only. Not for drug, food or household use. Keep out of reach of children. Printed on recycled paper.

SECTION V REACTIVITY DATA

Chemical Stability	Yes	<input checked="" type="checkbox"/>	If no, under what conditions?
	No	<input type="checkbox"/>	
Incompatible with Other products	Yes	<input checked="" type="checkbox"/>	Strong oxidizers.
	No	<input type="checkbox"/>	

Hazardous Decomposition Products: Reacts with hydrofluoric acid to generate volatile and corrosive gas - silicon tetrafluoride.

Reactive under what conditions: See above.

SECTION VI TOXICOLOGICAL PROPERTIES

Route of Entry	Inhalation.
TLV	TWA: 0.1 mg/m ³ OSHA
Toxicity for animals	Not available.
Chronic effects on humans	Repeated or prolonged exposure to the substance can produce target organ damage. Target organs: Lungs.
Acute effects on humans	Harmful if inhaled. Abrasive to the skin and eyes.

SECTION VII PREVENTIVE MEASURES

Discharge, treatment, or disposal may be subject to local laws. Consult your local or regional authorities.

Storage: Keep container in a cool, well ventilated place. Keep away from incompatible materials.

Precautions: Avoid contact with skin and eyes. Do not breathe dust. Use with adequate ventilation. Do not ingest. If ingested, seek immediate medical attention.

Spill or leak: Use appropriate tools to put the spilled solid in a convenient waste disposal container. Wash spill area with soap and water.

Protective Clothing: Gloves, safety glasses, lab coat, dust respirator.

SECTION VIII FIRST AID MEASURES

Ingestion: Call physician or Poison Control Center immediately. Induce vomiting only if advised by the appropriate medical personnel. Eye contact: Check for and remove any contact lenses. IMMEDIATELY flush eyes with running water for at least 15 minutes, keeping eyelids open. Seek medical attention. Skin contact: Gently and thoroughly wash the contaminated skin with running water and non-abrasive soap. Inhalation: Move victim to fresh air. If not breathing, give artificial respiration. If breathing is difficult, give oxygen. Allow victim to rest in a well ventilated area. Seek immediate medical attention.

SECTION IX PREPARATION OF THE MSDS

Rev. No.	2	Date	May 17, 2005	Approved	Michael Paszeja
----------	---	------	--------------	----------	-----------------

SS0090